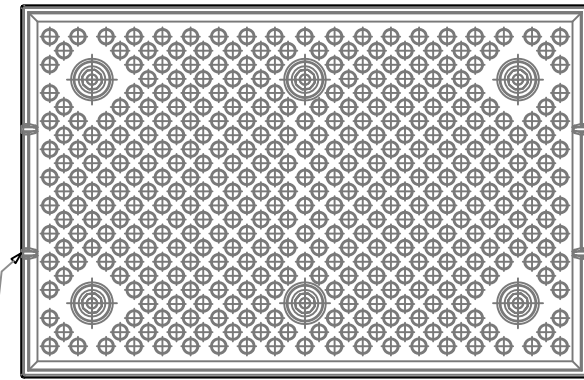
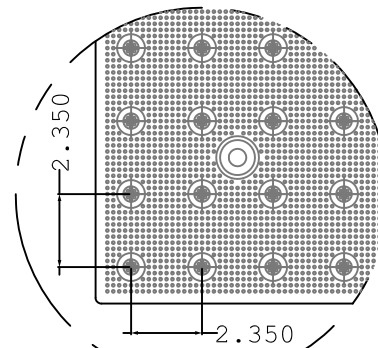
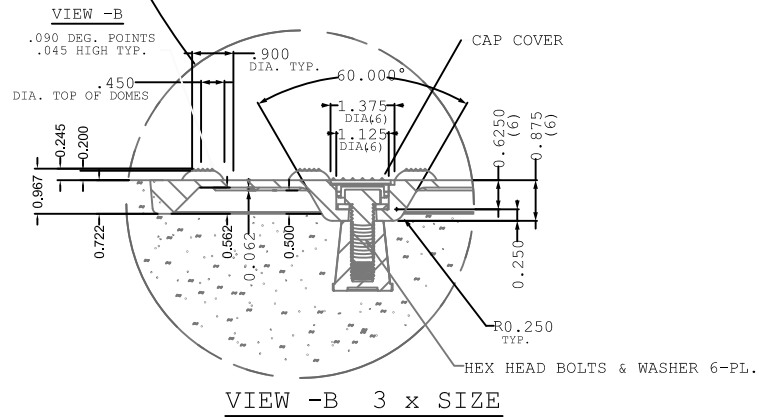
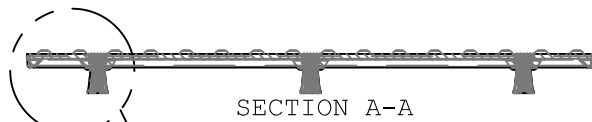


NOTE: U.S. PATENT # 7,779,581 APPEARS ON TOP SIDE OF PART AS SHOWN.



**BOTTOM VIEW**

AIR VENTS LOCATED ON THE ENDS OF THE TWS UNIT



WWW.ADATILE.COM

U.S. PATENT # 7,779,581

TRADE TACTILE WARNING SURFACE	PART NO. 2436STDNVREP
MATERIAL SMC COMPOSITE	

<b>PROJECT</b>	
WET SET ADA STD REPLACEABLE TACTILE WARNING SURFACE UNIT 6-BOLT LOCATIONS 2.350" IN LINE TRUNCATED DOME PATTERN PART SIZE 24" x 36" PLANS AND DETAILS	

DRAWING NO. ADA-REPSTD2436	DATE 09-25-10
-------------------------------	------------------

ADA SOLUTIONS, INC.  
(800) 372-0519  
P.O. Box 3  
N.Billerica, Ma. 01862